

RASPBERRY PI STYLE ENCLOSURES

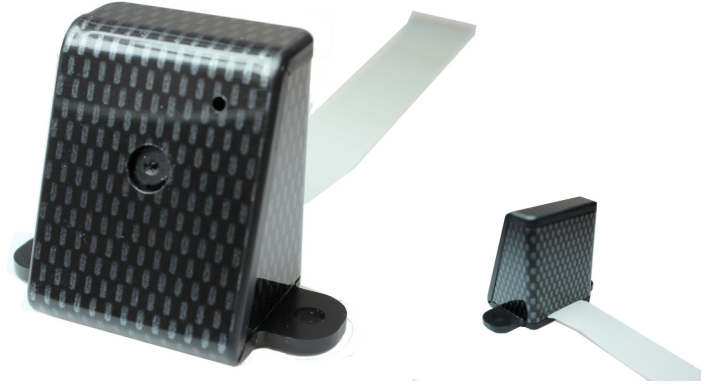
Pi Camera Enclosure

No screws, no glue – just add your **Raspberry Pi Camera!**

- Designed to house the **Pi Camera** via clip-in grooves - **NO SCREWS REQUIRED!**
- All cut-outs are pre-cut into the case - **NO MODS REQUIRED!**
- Wall mountable
- High **Gloss Finish**

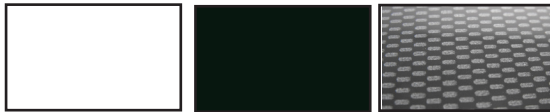
Material:

- Thickness 3mm: HB Rated
- Coloured Materials: High Impact Polystyrene (HIPS)
- Carbon Fibre Finish: Acrylic Capped ABS



Raspberry Pi Camera not included

Available in a range of colours: **Gloss Finish**



White

Black

*Carbon Fibre

* Carbon fibre finish:Acrylic capped ABS

CB PART NO.	COLOURS
CBRPC-WHT	White
CBRPC-CAR	Carbon Fibre
CBRPC-BLK	Black

UNIVERSAL ENCLOSURES

HAND HELD CASES

HEAVY DUTY ENCLOSURES

DIN RAIL BOXES

INTERFACE SUPPORTS

CONTROL STATIONS

DIECAST & METAL BOXES

DESKTOP & INSTRUMENT CASES

POTTING BOXES

19" ENCLOSURES

19" SUBRACKS

CUSTOM SIZED ENCLOSURES

CUSTOM SERVICES